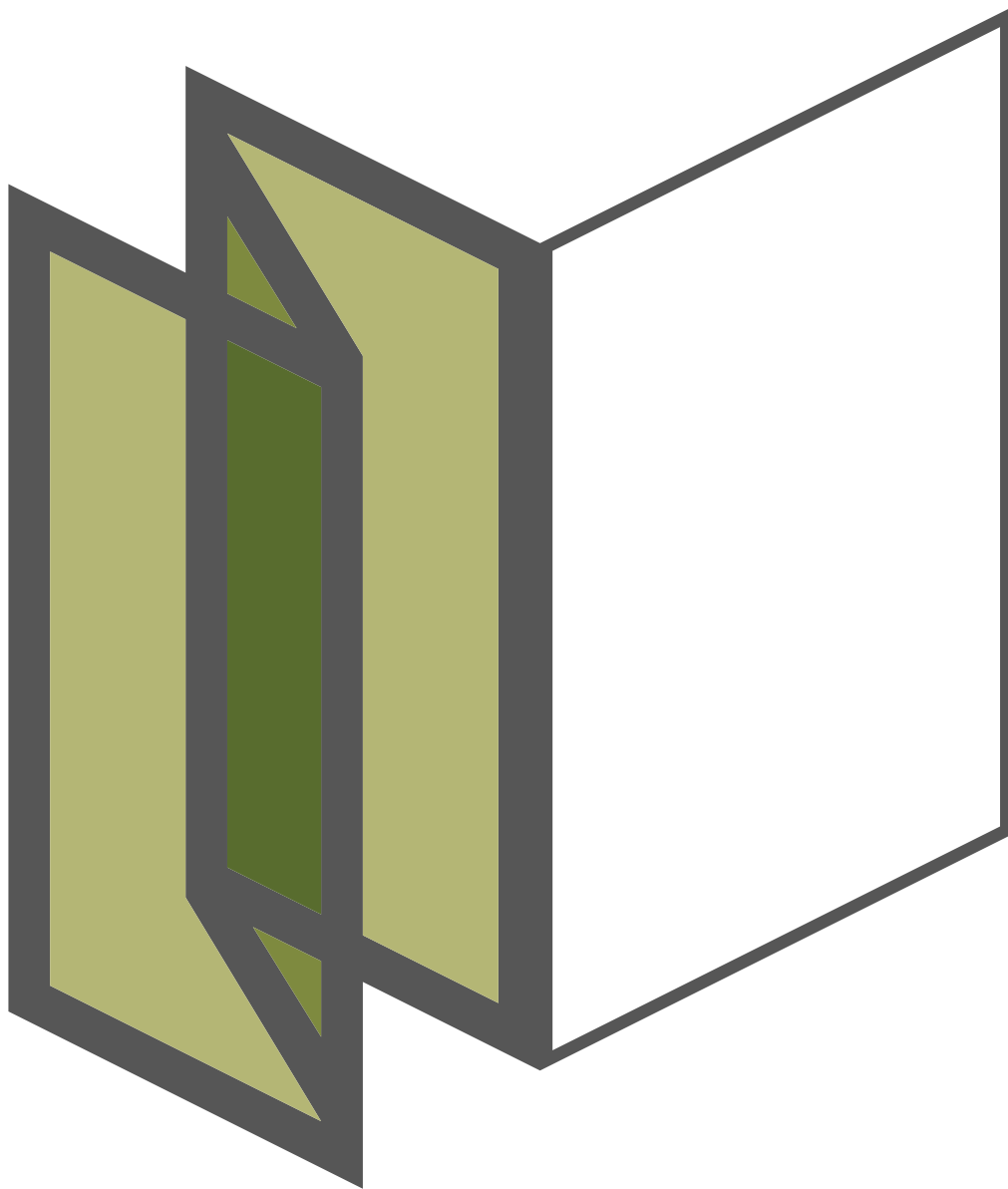


WOODLINE · COMBILINE

Bi-Folding Door



PRODUCT DATA SHEET

BI-FOLDING DOOR

WOODLINE · COMBILINE



1

CARRIAGE

- Stainless-steel carriage with double-layered grooved ball bearings
- Smooth and quiet operation
- Optimum load transfer
- Extremely low-maintenance and non-wearing



2

LOCKING MECHANISM

- RC2 version available
- 24 mm upward and downward stroke in the frame
- Can be connected to security technology
- Concealed cable routing



3

“COMFORT SNAP” PANEL CATCH

- Locks open swing panel in place against the next folding panel
- Functional catch allows the panels to be opened and closed easily





4

**"EASY CLEAN"
CLEANING PIN**

- Easy cleaning, even at great heights
- Convenient locking and unlocking thanks to misuse prevention
- Retaining clip prevents hinge pin from falling out



6

**IMPACT PROTECTION
3S PROTECTION**

- High-quality, clip-in, aluminium impact protection
- Optimum lock groove coverage
- Also protects against dirt collection



5

ADJUSTABLE PROFILE

- Easy compensation for panel tolerances
- Adjust the panel using just one profile
- No interruption to weather sealing



7

FRAME COVER

- Aesthetically pleasing, flush-mounted cover for the sub-frame screws
- Concealed cable routing possible



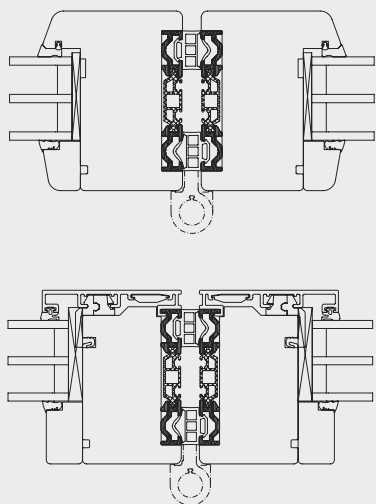
8

**"TWINX" CONCEALED PANEL
CENTRING MECHANISM**

- Non-stop panel design with even joint alignment
- No interruption to weather sealing
- Continuous sealing pressure

BI-FOLDING DOOR

WOODLINE · COMBILINE



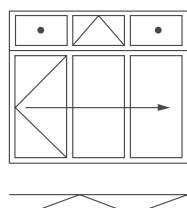
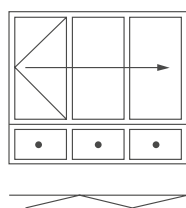
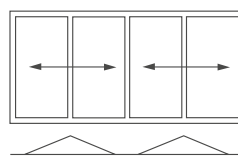
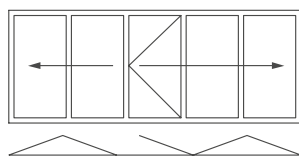
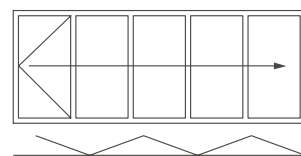
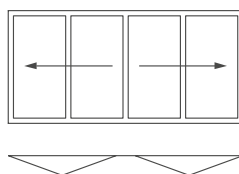
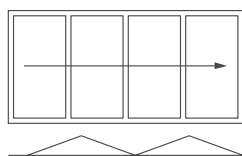
*The heart of the
bi-folding door*



The Woodline and Combiline variants of the bi-folding door both come with a patented aluminium profile shell system with a multi-functional break profile that channels dynamic loads from the

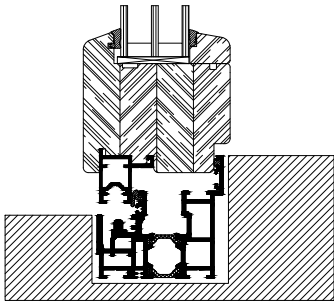
carriage and hinges into the panel frame. Its shape is the foundation of the whole system's sturdiness, housing the locking mechanism and fittings and guaranteeing perfect insulation.

Sample configurations

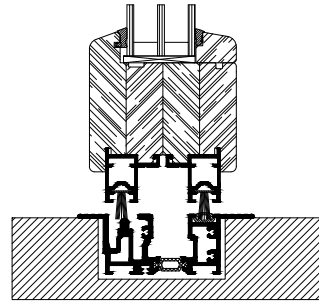


Floor track versions

All floor track versions are available in both Woodline and Compline

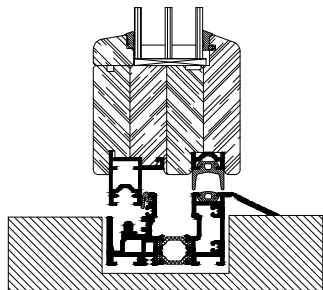


- Floor track suitable for living spaces
- With rebate



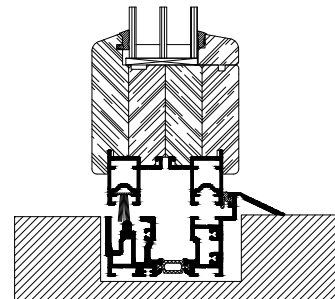
- Flush floor track
- Without rebate

Inward-opening

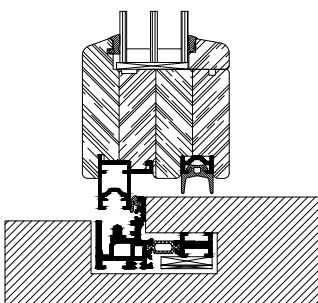


- Floor track suitable for living spaces
- With 14 mm rebate

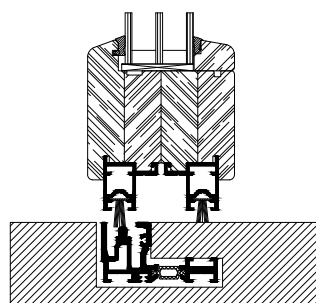
Outward-opening



- Floor track suitable for living spaces
- With 14 mm rebate



- Minimal floor track (29 mm deep)
- With 14 mm rebate



- Minimal floor track (29 mm deep)
- With 0 mm height offset

BI-FOLDING DOOR

WOODLINE · COMBILINE

System features

WOODLINE AND COMBILINE PROFILE SYSTEMS

- Thermally insulated timber window system with an overall depth of 86 mm in the panel profile
- Multi-laminated, high-quality wooden beams made using selected rifts and half-rifts
- Bottom-running; minimal load support required
- Edged (R2) timber panel frame profiles
- Single-piece, multi-functional bionicTURTLE® break profile force-fitted flush into timber panel
- Panels are manufactured with a form-fitted corner connection. A rounded collet fits exactly into the slot on the counter-piece, and an additional screw connection makes for an even sturdier panel joint
- Controlled drainage
- Running and guide rails built into the system
- Separate levels for runners and locks
- Accessible and living-space floor tracks also available
- Built-in, concealed cable routing

WOODLINE FEATURES

- The sub-frame comprises a static aluminium structure (mitre joint) that is laminated with solid-wood beams across its whole area, inside and out
- Slim sightline of 143 mm

COMBILINE FEATURES

- An angular aluminium cover shell is mounted to the outer face of the wood panel. The sub-frame comprises a static aluminium structure (mitre joint) that is laminated with solid-wood beams on the inside of the frame
- Slim sightline of 147 mm

SEALING SYSTEM

- The seal encompasses two all-round sealing levels with constant gap sizes and even seal pressure between the panels
- Weather sealing not interrupted by fittings
- Sheathed foam seals with optimum sliding properties
- Optional convection chamber interruption seals for improved U-values
- Up to three sealing level options available

CONFIGURATION OPTIONS

- Panels can fold either inwards or outwards, to either left or right
- Left and right sliding panel pairs also available
- Floor track designs without rebates in compliance with German standard DIN 18040 on "Accessible construction"
- Floor tracks available as minimal floor tracks without height offset
- RC2-/RC2N burglar resistance optional

FITTINGS

- No protruding running or guide rails
- Locking mechanism integrated in thermal break laminated door stile and is single handedly operated
- With optional built-in "TwinX" concealed panel centring mechanism for high wind loads
- System hinges also suitable for heavy panel weights
- System adjustment mechanism built into sub-frame rebate
- Specially shaped stainless-steel running track with tapered roller allows the use of unguided carriages
- Stainless steel ball bearing sliding technology: low-noise, extremely durable stainless-steel track roller and running surface
- Easy-running, low-wear carriage fitted with double-row deep-groove ball bearings and built-in anti-prying guard
- Carriage height can be adjusted during installation
- Sliding lock or optional lock-in-place panel for controlled ventilation
- High-quality, stainless-steel Solarlux designer handles
- Lockable one-hand operation thanks to special gears with stroke of 24 mm
- Passdoor available with latch-key-activated, multi-point lock and profile cylinder
- Secure hinge pin
- Secure cleaning pin with convenient unlocking mechanism and misuse prevent system to allow cleaning of the outsides of the panels on inwards-opening bi-folding door elements
- Thanks to its defined locking points, this cleaning pin can be used for both paired and unpaired bi-folding doors
- Lock monitoring system with reed contacts and concealed cable routing
- Patented "Comfort Snap" panel catch
- Optional load-transferring plates with centring grooves and sealing cushions for mounting the sub-frame profiles
- Additional mounting screw covers in frame rebate








ENVIRONMENT

- Sustainable production
- FCC (Forest Stewardship Council), COC (Chain Of Custody)
- PEFC (Programme for the Endorsement of Forest Certification Schemes)
- Certified disposal in accordance with DIN EN ISO 14001:2009








OPERATIONS

- In-house production control
- Tested in accordance with DIN EN 1090, design class EXEC1 & EXEC2, certified in accordance with DIN ISO 9001

Woodline characteristics

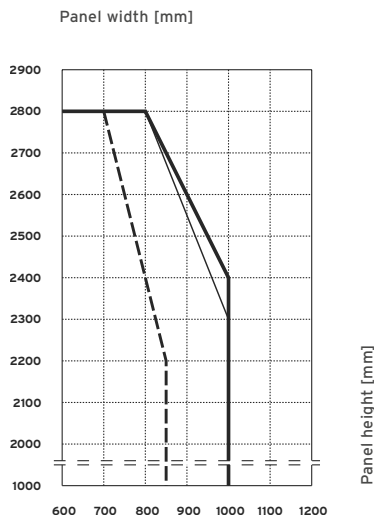
	Resistance to wind load in accordance with DIN EN 12210	C3
	Impermeability to driving rain in accordance with DIN EN 12208	7A
	Air permeability in accordance with DIN EN 12207	3
	Durability in accordance with DIN EN 12400	2
	Burglar resistance to DIN EN 1627-1630	RC2/RC2N
	Acoustic class in accordance with DIN EN ISO 10140-2	Rw up to 42 dB
	Thermal transmission coefficient in accordance with DIN EN ISO 10077-1	$U_w \geq 1,0$ W/m ² K

Combine characteristics

	Resistance to wind load in accordance with DIN EN 12210	C3
	Impermeability to driving rain in accordance with DIN EN 12208	7A
	Air permeability in accordance with DIN EN 12207	3
	Durability in accordance with DIN EN 12400	2
	Burglar resistance to DIN EN 1627-1630	RC2/RC2N
	Acoustic class in accordance with DIN EN ISO 10140-2	Rw up to 42 dB
	Thermal transmission coefficient in accordance with DIN EN ISO 10077-1	$U_w \geq 1,1$ W/m ² K

Notice package for Woodline and Combine: Specification may vary depending on design and glass

Woodline and Combine panel sizes



—
Applies to fill-ins / glazing
max. 25 kg / m²

—
Applies to fill-ins / glazing
max. 30 kg / m²

Applies to fill-ins / glazing
max. 45 kg / m²

Woodline

SIGHT LINES	
· Frame	0 - 72 mm
· Panel	82 mm
· Sightline	143 mm
· Overall frame depth	91 mm
· Overall panel depth	86 mm
· Minimal floor track	29 mm

NOTICE FOR WOODLINE AND COMBILINE

- Dimensions including outer frame
- Horizontal rails recommended for system heights of 2,550 mm and over
- Panel weight: Max. 100 kg
- Min. panel width of 800 mm for paired design, or 650 mm for left / right sliding design
- Max. panel height of 2,800 mm for swing-panel design
- Not accounting for wind and impact loads
- Special sizes available on request

GLAZING

- Suitable for use with glass thicknesses of 28 - 52 mm (Combine), 28 - 48 mm (Woodline)
- Dry glazing

Combine

SIGHT LINES	
· Frame	0 - 72 mm
· Panel	104 mm
· Sightline	147 mm
· Overall frame depth	77 / 83 mm
· Overall panel depth	86 mm
· Minimal floor track	29 mm

