



GLASS SYSTEMS

FOR PUBLIC AND PRIVATE APPLICATIONS IN ASIA



SL 70e / CLIVEDEN AT GRANGE, SINGAPORE

CONTENTS

ABOUT SOLARLUX	04
CERO BY SOLARLUX	08
BI-FOLDING DOORS	18
REFERENCE PROJECTS	36



PAST AND
FUTURE -
WE RESPECT
both

ABOUT SOLARLUX



SOLARLUX CAMPUS / MELLE, GERMANY

SOLARLUX - MORE THAN 35 YEARS OF EXPERIENCE

Down-to-earth, innovative and passionate

For more than 35 years, Solarlux has represented exceptional quality in the production of bi-folding doors, facade solutions and glazed extensions. Founded by Herbert Holtgreife, the German company is now managed by his son, Stefan. Around the world, about 850 passionate staff bursting with ideas form the daily backbone for the family-owned company's success. Architects, home owners, contractors, private customers and developers alike all come to Solarlux for top-quality service and technical perfection in their glazing products.

MADE IN GERMANY

International certificates and design awards

All of our products are made in our own production halls on the Solarlux Campus in Melle, near the north-west German town of Osnabrueck. Every single system is made up entirely of high-quality aluminium or wood/aluminium profiles. We subject ourselves to continuous examination by independent institutions to guarantee that top-class, "Made in Germany" quality for our processes and materials. Using maximum precision and careful production processes, we produce top-of-the-range products that meet the highest quality standards. This exacting approach to quality and design is reflected in the certifications we have received from renowned test institutes and the important design awards we have won, such as the red dot and iF awards.

**EMBODYING OUR CORPORATE
CULTURE: THE SOLARLUX CAMPUS
WOWS WITH ITS OPEN ARCHITECTURE**





HIGH-QUALITY MATERIALS

Aluminium for durability and low maintenance

All of the materials used to make Solarlux systems are durable and of the highest quality. We apply environmental awareness to our aluminium production - Solarlux is certified in accordance with the German A.U.F. Recycling Loop, which has confirmed that our aluminium is recycled in an environmentally conscious manner that saves on resources.

THE SOLARLUX WORLD OF COLOURS

Anything is possible – all you have to do is ask!

With 30 standard RAL colours available in the Solarlux pallet, you can give any Solarlux system an individual touch - and of course, we also offer special colours, ELOXAL, DB, and special surface finishes such as fine-texture on request. Solarlux's standard colour options offer all the colours of the rainbow in matt and gloss finishes at no extra cost, so every system can be designed to match the overall project colour scheme. We use our own in-house clean-room coating process - one of the most modern in Europe - for top surface quality.



30 STANDARD RAL COLOURS

 RAL 1015	 RAL 3011	 RAL 5003	 RAL 5008
 RAL 5014	 RAL 6005	 RAL 6009	 RAL 7004
 RAL 7006	 RAL 7015	 RAL 7016	 RAL 7021
 RAL 7024	 RAL 7035	 RAL 7038	 RAL 7039
 RAL 7040	 RAL 8017	 RAL 8019	 RAL 8022
 RAL 8077	 RAL 9001	 RAL 9003	 RAL 9004
 RAL 9005	 RAL 9006	 RAL 9007	 RAL 9010
 RAL 9011	 RAL 9016		

**COATINGS MADE
IN-HOUSE TO CATER TO
ALMOST ANY REQUEST**





CERO II / DEN HAAG, NETHERLANDS

THE SLIDING WINDOW FOR MAXIMUM transparency

CERO BY SOLARLUX

cero

CERO - THE SLIDING WINDOW

Floor-to-ceiling glazing, 34 mm sight line

Understated profiles, flexible system design, glass areas of up to 15 m²: the exclusive cero sliding window opens up rooms to give them an impressive new dimension. cero offers every option required for architecturally demanding buildings from a constructive and creative point of view. Its slender frames and profiles help to make the elements transparent. The sight lines are kept

to just 34 mm, resulting in a minimalist design that is underlined by its 98 % glass composition. cero is characterised by great aspirations when it comes to design – a fact confirmed by the prestigious design prizes it has been awarded: the iconic “Best of the Best” award in the “Façades” category and the IF Gold Award in the “Building Technology” category.



The benefits of cero at a glance

WIND LOADS

The cero has been adapted to Hong Kong Building Department requirements and tested for wind loads of over 6.000 Pa. This is the cero I-s (Asia).

THERMAL INSULATION

cero offers optimum thermal insulation values, with U_w values of 0.8 W/m²K (in the passive house range) when using triple-glazed safety glass for example. cero is tested and certified.

BURGLAR RESISTANCE

cero has been tested and certified in line with the highest security standards, and equipment that meets anti-burglary protection classes RC2 and RC3 is available as an option. Connections to alarm systems, a lock monitoring system and notification systems such as broken glass sensors and position monitoring systems are all available as options.

MOTORISATION

The sliding elements can be fitted with a fully automated operating system including electro-mechanical locking and unlocking. A group control unit can be used to control the closing sequence in systems with multiple, interdependent, motor-driven panels. Thanks to this, up to six motors can be controlled within one system.

ACCESSORIES

To provide optimum shade for its large glass surfaces, cero offers a motor-driven sun-protection system with guide rails to fit the frame. Insect protection up to 1.30 m in width and 3 m in height can be integrated into the frame.

HANDLES

cero comes with a high-quality, brushed V4A stainless steel handle as standard to guarantee maximum protection against corrosion.

HEIGHT ADJUSTMENT

Two and three-track cero II systems can be fitted with an optional height adjustment mechanism above the top frame profile. This can be used to adjust the system height after installation.



CUSTOM OPTIONS

AVAILABLE FOR
COLOURS, HANDLES
AND MUCH MORE

MAXIMUM FLEXIBILITY FOR EVERY PROJECT

Opening system variants

Sliding to the left and/or to the right, straight or cornered, motorised or manual - cero offers numerous opening system variants to suit any project. Thanks to the ingenious engineering, the large glass elements can be opened with ease - and almost no noise.



AESTHETIC DESIGN MEETS ACCESSIBILITY

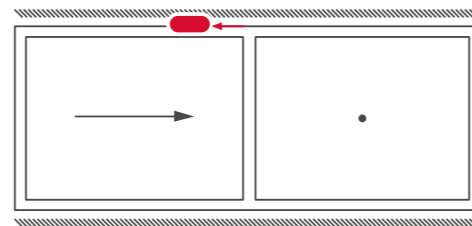
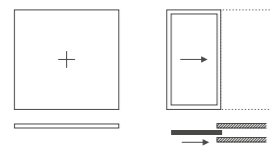
The cero floor track variants

cero comes with a flush floor track in order to ensure accessibility. The profile depth varies depending on how many tracks you require; for cero II, for example, it would be between 71 mm (single-track), 157 mm (two-track) and 243 mm (three-track). The floor track for cero II can be fitted with an insert that matches your interior design, ensuring that your home boasts a harmonic and highly aesthetically pleasing appearance both inside and out. The flush floor tracks can be either installed level with the indoor floor or given a slight ramp on the inside and/or outside.



CONFIGURATION EXAMPLES

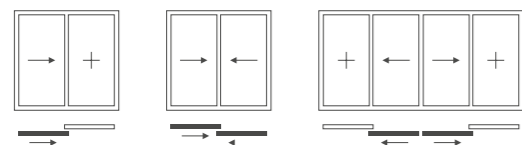
Track for one panel



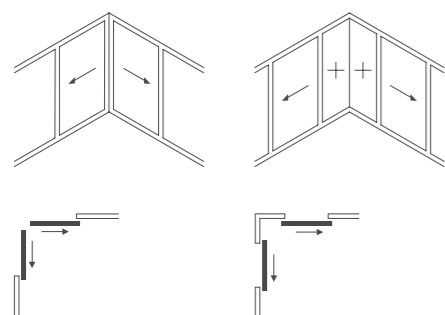
ELECTRIC DRIVE FOR SLIDING PANEL

Electric motor fitted above top frame profile; belt drive located between the top frame profile and the sliding panels. Each panel has a dedicated motor that can move a panel weight of up to 1,000 kg.

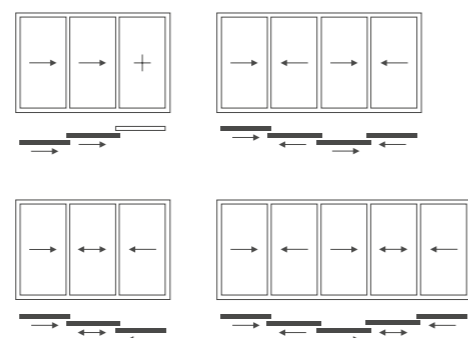
Track for two panels



Corner solutions

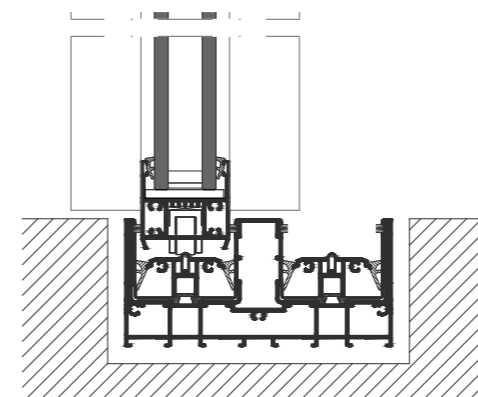


Track for three panels

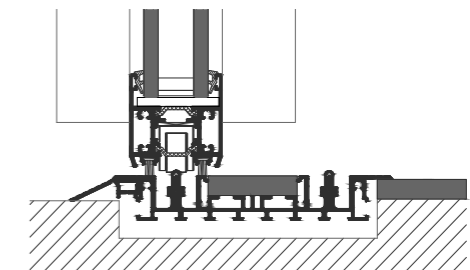
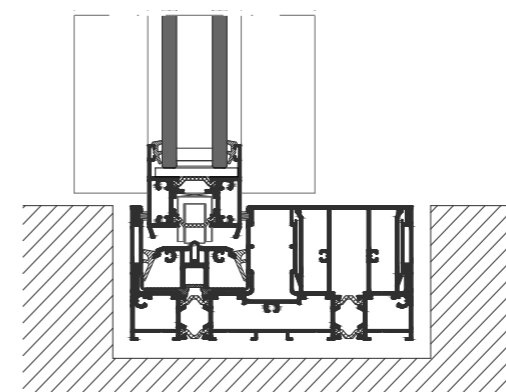


FLOOR TRACKS

cero I-s (cero Asia)



cero II



CERO I-s (Asia)

Aluminium, non-insulated

In order to meet increased structural requirements - e.g. due to typhoons and hurricanes - we have developed a stronger profile variant for the cero sliding system. For the non-insulated cero variant, we use reinforced profiles with outstanding structural specifications. This new version has been developed according to Hong Kong Building Department requirements and was successfully tested in Hong Kong as a two-panel system with dimensions of W x H 4,000 m x 3,500 m and a panel weight of 600 kg per panel. The results of this test were as follows:

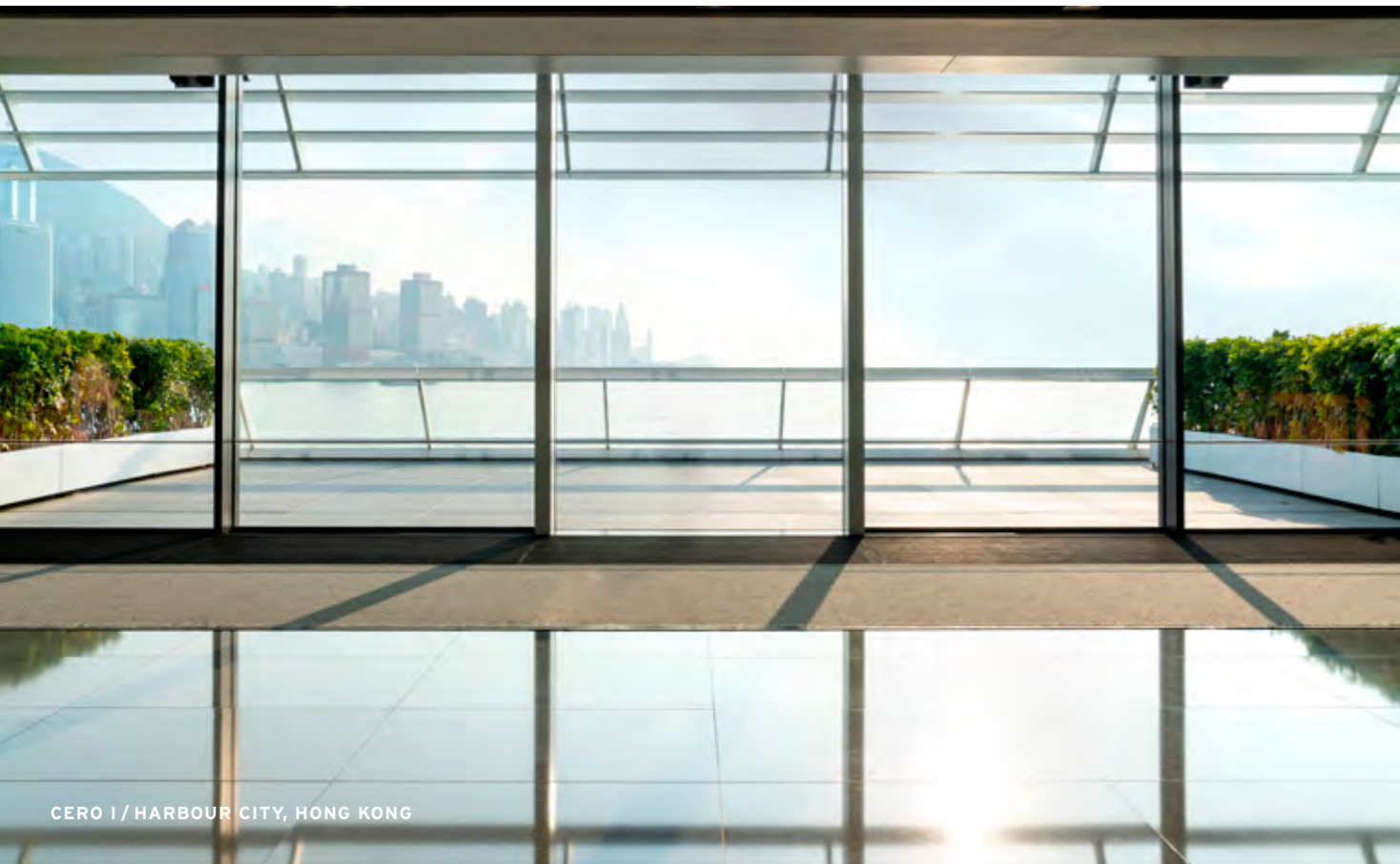
STRUCTURAL SAFETY TEST IN ACCORDANCE WITH ASTM E330 > 6,400 PA

Air infiltration in accordance with ASTM E283-04 > 300 Pa

Water penetration in accordance with ASTM E 331-00 > 770 Pa

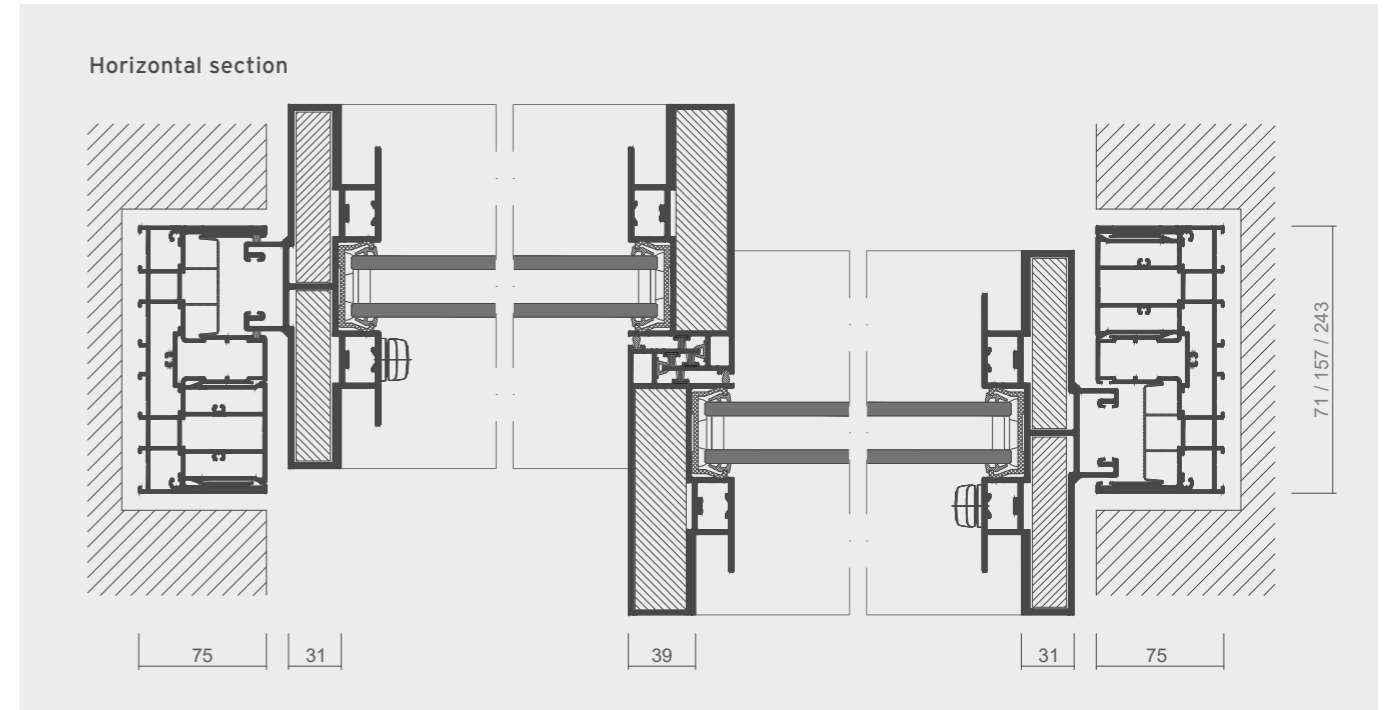


VIDEO: FLOOR-TO-CEILING GLAZING
WITH UNDERSTATED PROFILES - NEW
PERSPECTIVES WITH CERO



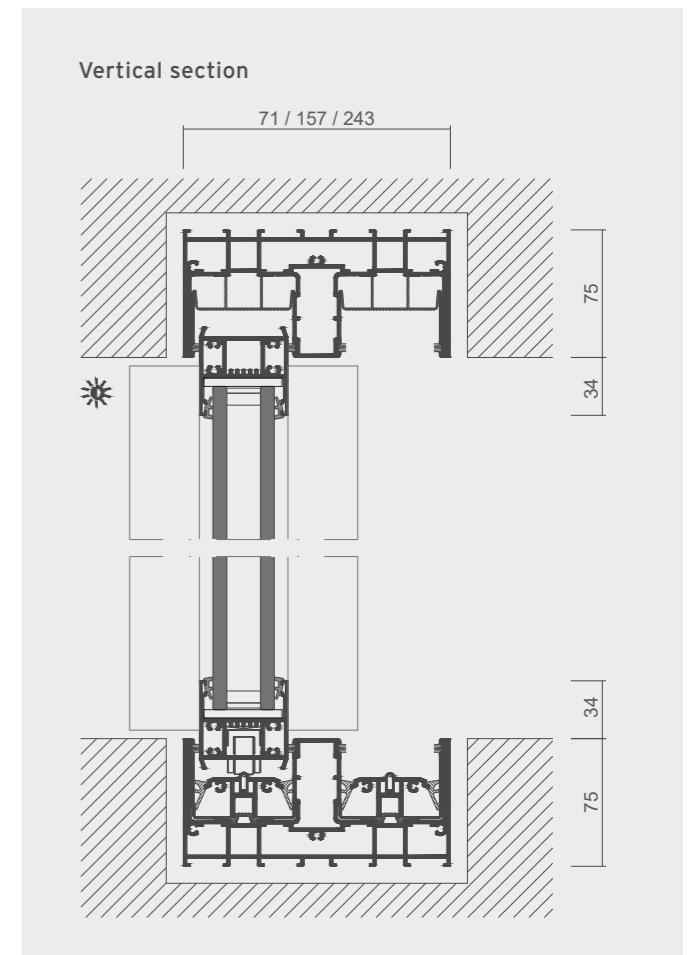
CERO I / HARBOUR CITY, HONG KONG

Detail sections & features



CERO I-s (ASIA) - TECHNICAL DATA

- Sliding element (max. width x height): 3 x 4 m, max. panel size: 12 m²
- Insulated glazing 30-36 mm (TSG)
- Accessible running track in accordance with DIN 18040
- Max. panel weight: 600 kg
- Impermeability to driving rain: up to 770 Pa
- Air permeability: up to 300 Pa
- Wind load resistance: up to 6,405 Pa
- Insect protection: up to a height of 3 m



CERO II

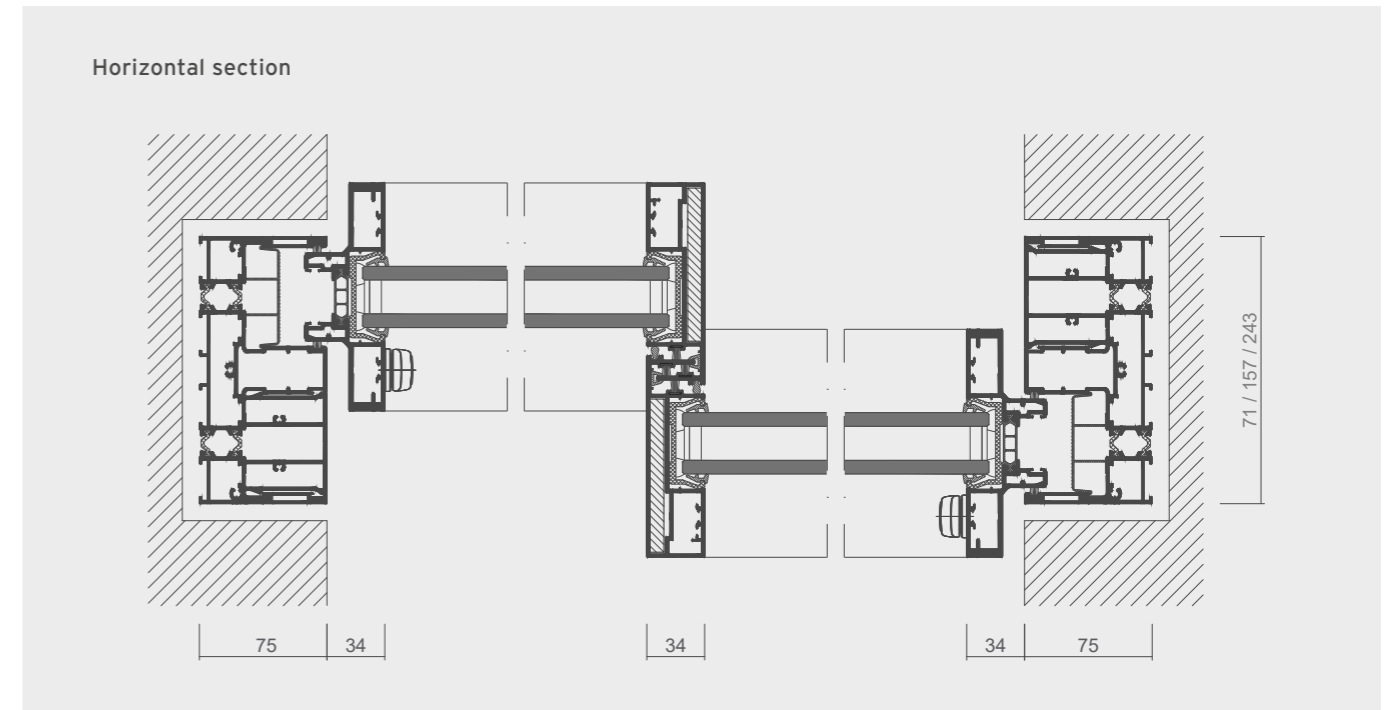
Aluminium, thermally insulated

The thermally insulated cero II system with double glazing is a great choice for buildings that need accessible entrances and exits and a flush floor track. The flush-mounted running tracks and guide rails are built into the system. The glass rebate ventilation guarantees controlled drainage.

**CERO CAN BE
CONNECTED
TO EXISTING
ALARM SYSTEMS**

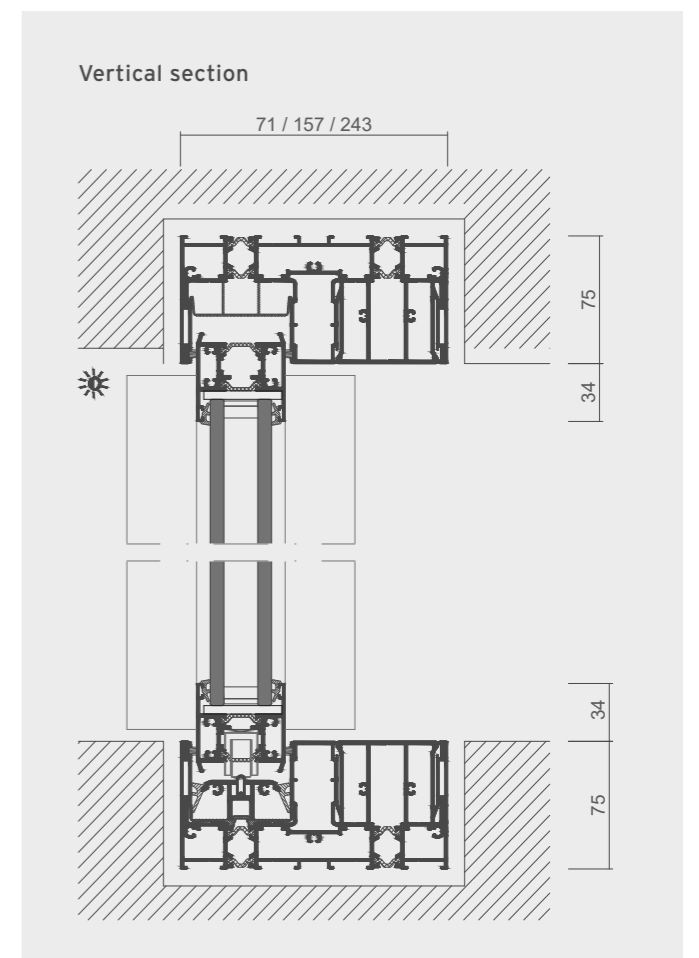


Detail sections & features



CERO II - TECHNICAL DATA

- Sliding element: 3 x 4 m, max. panel size: 12 m²
- Insulated glazing 30 - 36 mm (TSG)
- Accessible running track in accordance with DIN 18040
- Max. panel weight: 600 kg
- Thermal insulation value (glass $U_g = 1.1 \text{ W/m}^2\text{K}$)
 U_w up to $1.35 \text{ W/m}^2\text{K}$
- Impermeability to driving rain: up to 600 Pa
- Air permeability: up to 300 Pa
- Wind load resistance: up to 3,120 Pa
- Insect screen: up to a height of 3.00 m



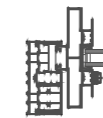
CERO AT A GLANCE

Overview of all features and performance ratings

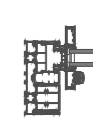


CERO III / BODENSEE, GERMANY

zero I -s (zero Asia)



zero II



Sliding elements (max. width x max. height)	3 x 4 m/max. panel size: 12 m ²	3 x 4 m/max. panel size: 12 m ²
Fixed glazing (max. width x max. height)	3 x 4 m/max. panel size: 12 m ²	3 x 4 m/max. panel size: 12 m ²
Insulated glazing (double/triple)	30 - 36 mm (TSG)	30 - 36 mm (TSG)
Daylight/glass content	98 %	98 %
Running mechanism	Stainless steel carriages and running tracks	Stainless steel carriages and running tracks
Running track/floor profile	Accessible in accordance with DIN 18040	Accessible in accordance with DIN 18040
Panel weight	max. 600 kg	max. 600 kg
Sight line	Horizontal: 34 mm, vertical: 39 mm	All-round: 34 mm
Frame height	0 - 75 mm	0 - 75 mm
Sound insulation	43 dB	43 dB
Thermal insulation value (glass U _g = 1.1 W/m ² K)	-	U _w up to 1.35 W/m ² K
Impermeability to driving rain	770 Pa	600 Pa
Air permeability	300 Pa	300 Pa
Wind load resistance	6,405 Pa	3,120 Pa
Motorisation	Electro-mechanical drive, optional automatic function	Electro-mechanical drive, optional automatic function
Insect screen	Max. 1.3 x 3 m (max. area: 3.5 m ²)	Max. 1.3 x 3 m (max. area: 3.5 m ²)



FOR A SEAMLESS TRANSITION TO THE *outdoors*

BI-FOLDING DOORS

MUCH MORE THAN A WINDOW

The Solarlux bi-folding door

The bi-folding door has been the beating heart of Solarlux right from the very beginning. Unlike traditional sliding doors, which can leave a large section of the opening covered by glass even when fully open, the individual elements of the bi-folding door gather up into a slender bundle of panels that can be stored on one side. This produces generous glass fronts that can be opened across almost 100% of their area while still offering maximum protection when closed. All of our bi-folding doors are certified - but more than that, they are also subject to continuous testing by international test institutes.



GENEROUS OPENINGS

Bi-folding doors can be opened across almost their entire area, and even large elements can be moved with minimal force. They offer a sense of transparency, openness, light and airiness, thus making bright, modern rooms feel spacious in a way no other solution can match.



WIND LOADS

Solarlux's bi-folding doors effortlessly keep high wind loads at bay and can handle extremely demanding structural requirements. Depending on the project and system in question, steel inserts can be used in the profiles for extra stability - or additional posts that are built into the system and move with the door. This makes bi-folding doors a safe option for use in facades and high-rise buildings.



SECURITY

Solarlux is the only manufacturer with anti-burglary protection class RC2 certification for its numerous bi-folding door opening variants. It doesn't matter whether the variant you choose opens inwards or outwards - increased security in accordance with European standards is guaranteed. In addition to this, Solarlux also offers extra-strict security standards for all its opening system variants.



IMPERMEABILITY

Constant testing for impermeability to wind and driving rain make Solarlux bi-folding doors a modern alternative to the traditional patio door.



SL 60HK / MOUNT PAVILIA, HONG KONG

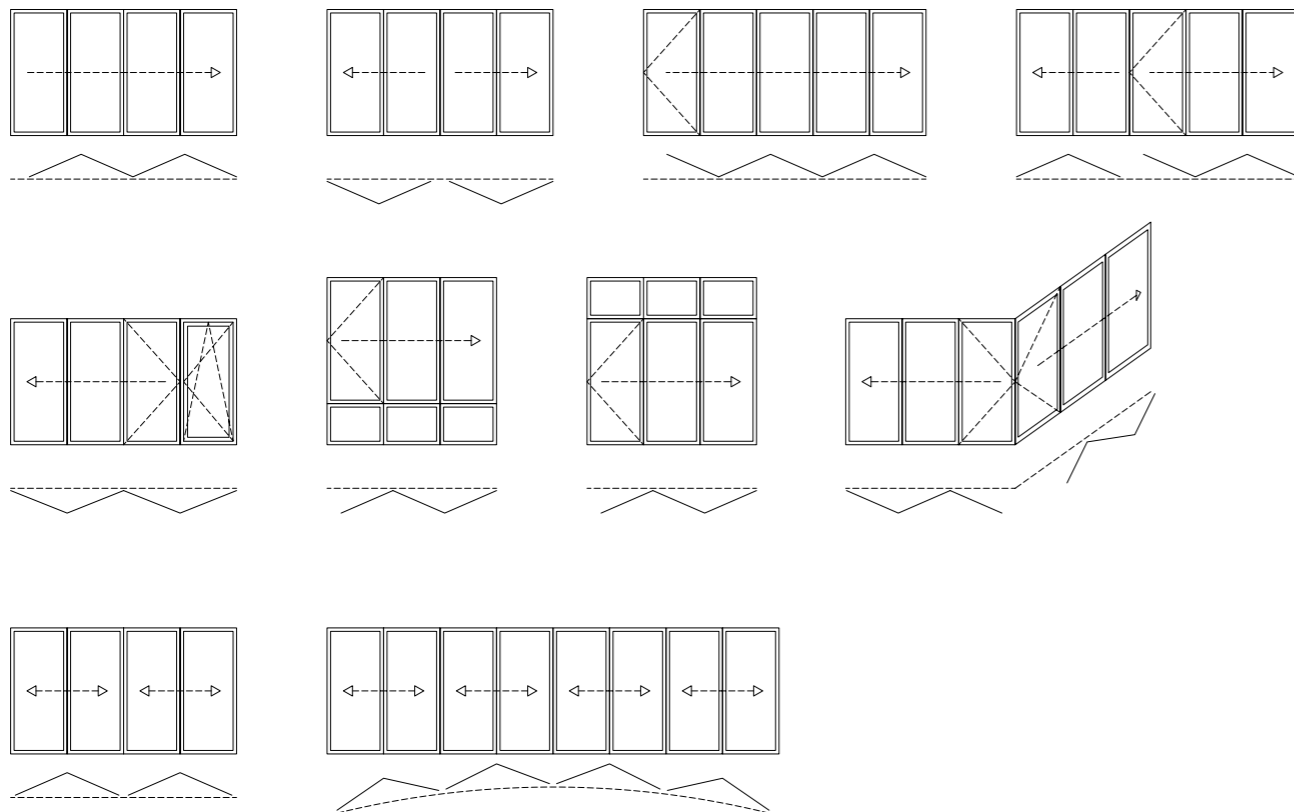
MAXIMUM FLEXIBILITY FOR EVERY PROJECT

Opening system variants

Inwards or outwards, folding to the left and/or to the right - Solarlux bi-folding doors offer numerous opening variants to suit any project. The individual glass elements can be opened or closed in just a few simple steps across their whole area. Thanks to the ingenious engineering, even very large glass elements can be opened with ease - and almost no noise. And of course, you can also integrate access doors, tilt & turn windows and fixed elements into your design - a wide selection of bespoke solutions.

OPENING INWARDS OR OUTWARDS, TO THE LEFT OR TO THE RIGHT: SOLARLUX OFFERS COUNTLESS OPENING VARIANTS

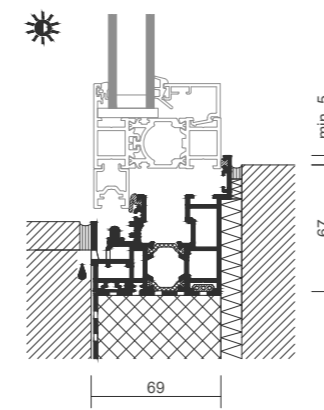
CONFIGURATION EXAMPLES



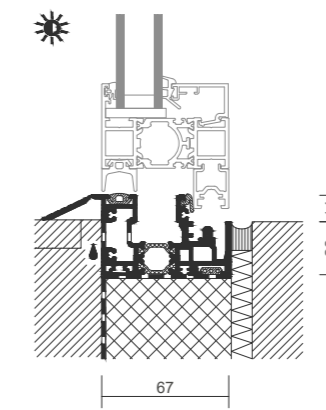
ACCESSIBLE ENTRANCES GUARANTEED

Floor track variants for bi-folding doors

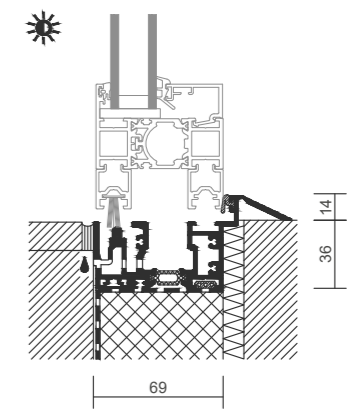
The only way to cater for different applications is with a variety of floor tracks. We offer the right solution for every area: accessible and suitable for living spaces, with a rebate or completely flush, and even a minimalist option with a width of just 29 mm. The runners and guide rails for the bi-folding door systems are integrated into the respective systems so they do not protrude.



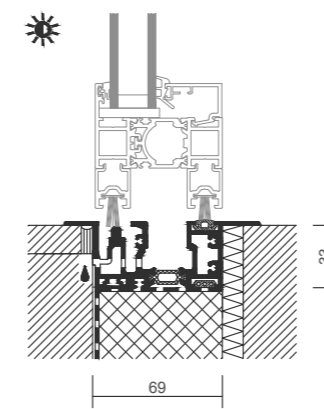
- Floor track with rebate suitable for living spaces
- Opens inwards or outwards



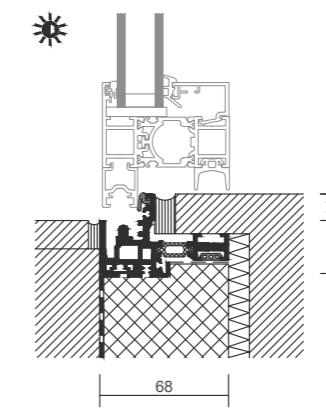
- Floor track suitable for living space
- Accessible with 14 mm rebate
- Opens inwards



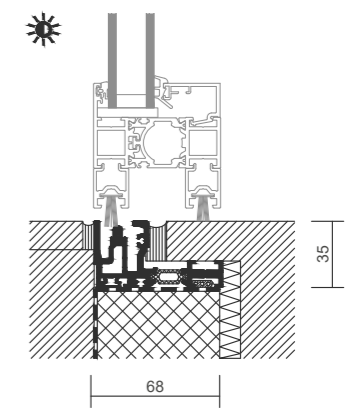
- Floor track suitable for living space
- Accessible with 14 mm rebate
- Opens outwards



- Flush floor track
- Accessible without rebate
- Opens inwards or outwards



- Minimalist floor track (29 mm)
- Accessible with 14 mm rebate
- Opens outwards



- Minimalist floor track (29 mm)
- Accessible without rebate
- Opens inwards or outwards

THE BI-FOLDING DOOR SYSTEMS

A variety of options to suit any requirement

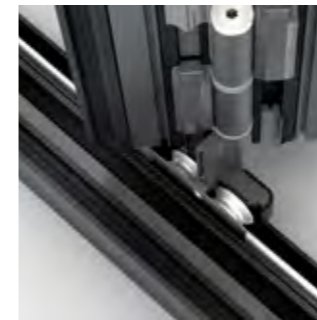
Private or public building projects, commercial projects, sports facilities or swimming pool glazing - whatever you need for your project, our comprehensive range of bi-folding doors has the right solution for you. Whether you're looking for incredibly slender sight lines, high wind load resistance or something for a segmented floor plan, we can offer you the perfect bi-folding door system.

ECOLINE AND HIGHLINE

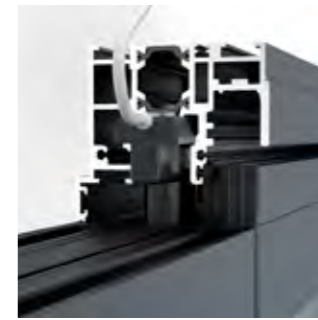
Aluminium, thermally insulated

INGENIOUS ENGINEERING WITH A SIGHT LINE OF JUST 99 mm

Despite their differences in overall depth (67 mm and 84 mm), our two thermally insulated bi-folding door systems, Ecoline and Highline, boast a slim sight line of 99 mm at the panel joint. This is thanks to the patented heart of the bi-folding door: the bionicTURTLE®, a multi-functional thermal break profile that combines a range of technical innovations. Its shape helps to keep profiles extremely slim - even when using large and heavy panels. The two systems are more than merely functional - they also boast an impressive design, which is reflected in the international design awards they have won.



- 1**
RUNNER ASSEMBLY
- Stainless steel runner assembly with double-layered groove bearings
 - Smooth and quiet operation
 - Optimum load transfer
 - Extremely low-maintenance and non-wearing



- 2**
LOCKING
- 24 mm upward and downward stroke in the frame
 - Optional link to security system possible
 - Concealed cable routing
 - RC2 version available



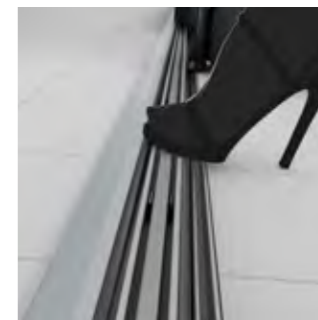
- 3**
"COMFORT SNAP" PANEL CATCHES
- Locks open swing panel in place against the next folding panel
 - Functional catch allows the panels to be opened and closed easily



- 4**
"EASY CLEAN" REMOVABLE HINGE PIN
- Easy cleaning even with high floor-to-ceiling dimensions
 - New integral locking technology with error device
 - Captive hinge pin which cannot drop out accidentally



- 5**
ADJUSTMENT PROFILE
- Simple adjustment for panel tolerances
 - Adjustment of panels from one single profile
 - No break in sealing



- 6**
3S TRACK GUARD
- High quality clip-on aluminium track guard
 - Integrated locking channel cover
 - Prevents ingress of dirt



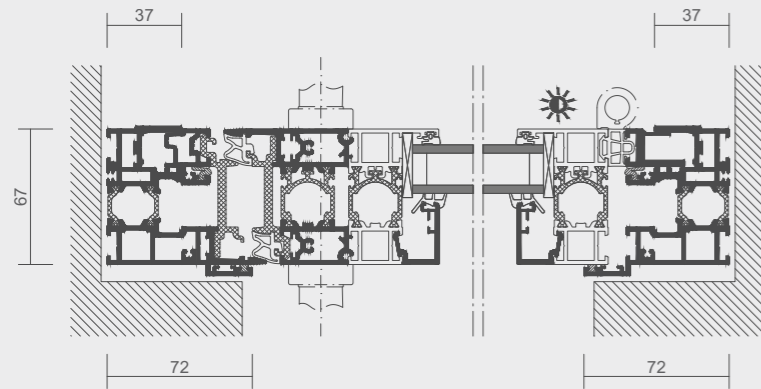
- 7**
FRAME COVER
- Tasteful, flush cover for subframe fixing screw heads
 - Concealed cable routing cover possible



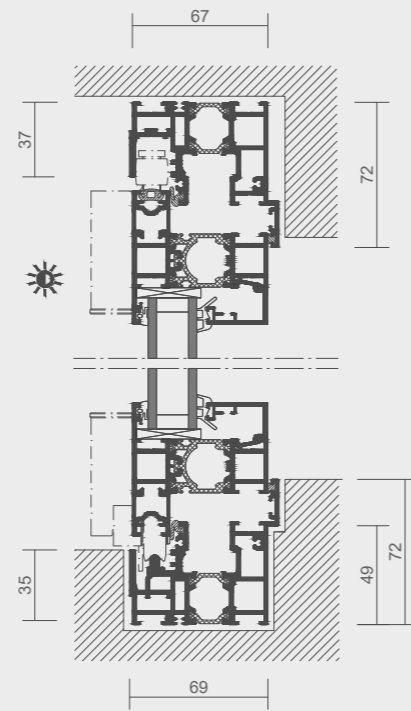
- 8**
"TWINX" CONCEALED PANEL CENTRING MECHANISM
- Elegant slimline panel design throughout, with even joints
 - No break in sealing face
 - Constant sealing pressure

Detail sections & features

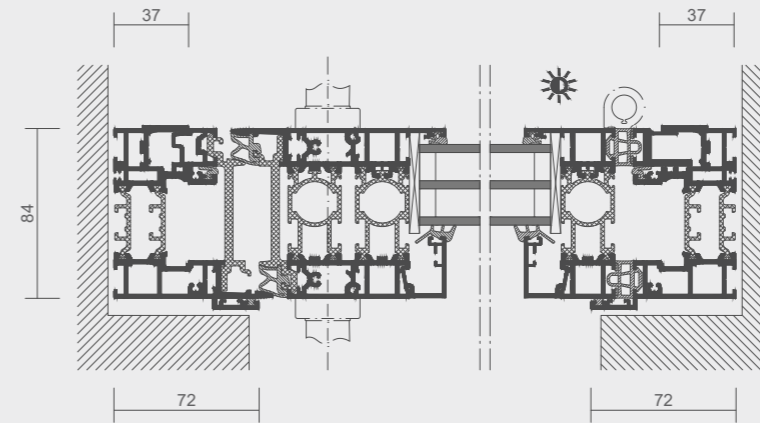
Horizontal section



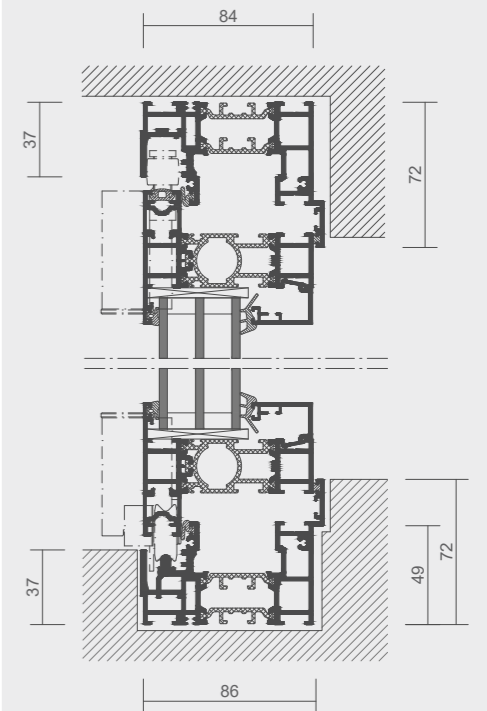
Vertical section



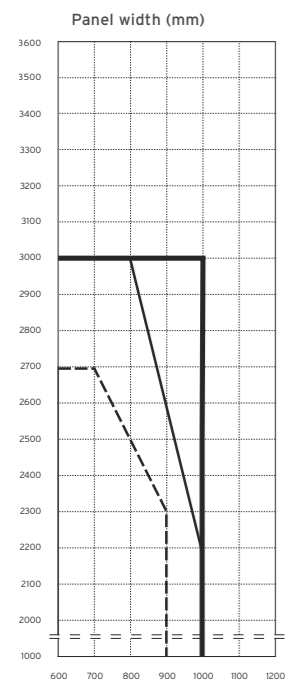
Horizontal section



Vertical section



ECOLINE PANEL SIZES



- Applies to infill panels/glass up to 25 kg/m²
- - - Applies to infill panels/glass up to 35 kg/m²
- · · Applies to infill panels/glass up to 45 kg/m²

VISIBLE PROFILE THICKNESSES

- Frame: 0 - 72 mm
- Panel: 66 mm
- Panel joint: 99 mm
- Frame thickness: 67 mm
- Panel thickness: 67 mm
- Mini floor track: 29 mm

GLAZING

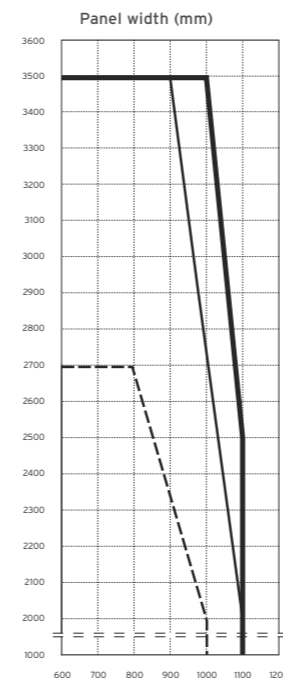
- Suitable for use with glass thicknesses of 5 - 36 mm
- Dry glazing

- Note:
- Dimensions include frame section
 - Horizontal division bars recommended for system heights ≥ 2,550 mm
 - Max. panel weight: 90 kg
 - Min. panel width: 600 mm for paired versions (550 mm if used for left-to-right sliding versions)
 - Max. panel size may be smaller for applications with high wind and impact loads
 - Special sizes available on request

ECOLINE

- Overall panel depth: 67 mm
- Panel joint sight line: 99 mm
- Glass thickness: 5 - 36 mm
- $U_w \geq 1.1 W/m^2K$
- Panel width: up to 1 m
- Panel height: up to 3 m
- Panel weight: up to 90 kg
- Optional accessible floor track

HIGHLINE PANEL SIZES



- Applies to infill panels/glass up to 25 kg/m²
- - - Applies to infill panels/glass up to 35 kg/m²
- · · Applies to infill panels/glass up to 45 kg/m²

VISIBLE PROFILE THICKNESSES

- Frame: 0 - 72 mm
- Panel: 66 mm
- Panel joint: 99 mm
- Frame thickness: 84 mm
- Panel thickness: 84 mm
- Mini floor track: 29 mm

GLAZING

- Suitable for use with glass thicknesses of 22 - 60 mm
- Dry glazing

- Note:
- Dimensions include frame section
 - Horizontal division bars recommended for system heights ≥ 2,550 mm
 - Max. panel weight: 110 kg
 - Min. panel width: 800 mm for paired versions (650 mm IF used for left-to-right sliding versions)
 - Max. panel size may be smaller for applications with high wind and impact loads
 - Special sizes available on request

HIGHLINE

- Overall panel depth: 84 mm
- Panel joint sight line: 99 mm
- Glass thickness: 22 - 60 mm
- $U_w \geq 0.8 W/m^2K$
- Panel width: up to 1.1 m
- Panel height: up to 3.5 m
- Panel weight: up to 110 kg
- Optional accessible floor track

THE SL 60HK BI-FOLDING DOOR

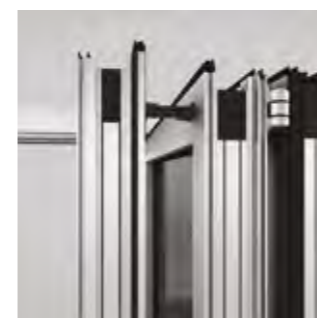
Aluminium, non-insulated

FOR HIGH WIND LOADS

The SL 60c bi-folding door is a non-insulated system that can handle exacting structural requirements. This makes it an outstanding choice for use in high-rise buildings, regions where there is a risk of typhoons and other applications where extremely high wind loads can occur. These qualifications are confirmed in its certificates from HOKLAS accredited testing centres.



THE SL 60HK IS DESIGNED TO HANDLE EXACTING STRUCTURAL REQUIREMENTS SUCH AS HIGH WIND LOADS



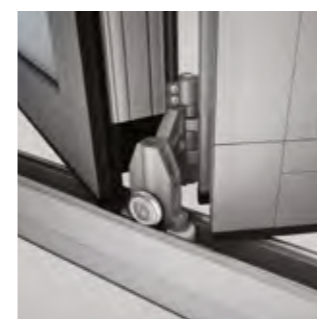
1 FUNCTIONAL RELIABILITY

- Controlled opening and closing of the access panel guaranteed
- Special panel catch locks the access panel in place



2 STABILITY

- Profile with no thermal break and with several reinforcement options for high wind load resistance
- Suitable for use in facades and high-rise buildings



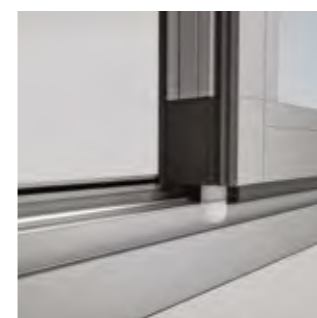
3 EASE OF USE

- Durable stainless steel carriages and rails for easy, quiet sliding
- Durable and low-maintenance



4 CLEANING

- Outside panes in top-hung systems can be cleaned easily by simply pulling out the hinge pins



5 SECURITY

- Espagnolette with stroke of 24 mm locks into the frame profile at top and bottom
- Profile cylinders also available for additional security



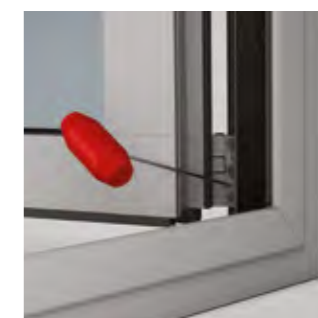
6 SECURITY/CONVENIENCE

- High burglar resistance in accordance with RC2/RC2N thanks to built-in SL comfort lock with lever handle, mortice sash lock with profile cylinder, and locking bolt



7 HEIGHT ADJUSTMENT

- Easy height adjustment for dimensional tolerances, even after installation
- Height can be adjusted by up to 6 mm in just a few simple steps

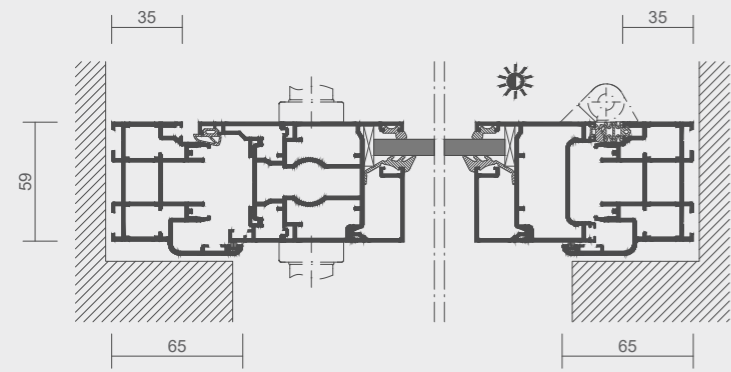


8 WIDTH ALIGNMENT

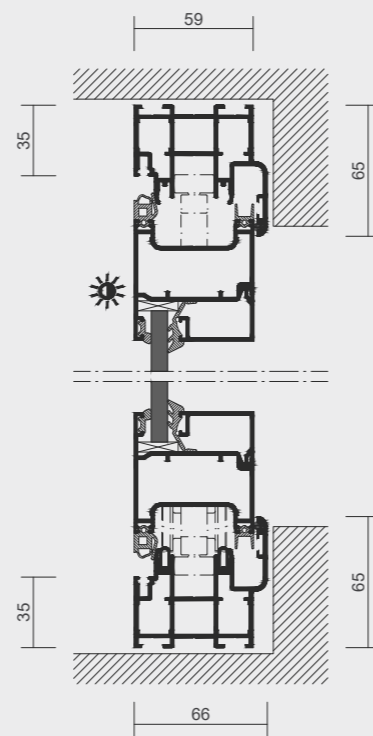
- Easy width alignment even after installation, thanks to adjustable hinge

Detail sections & features

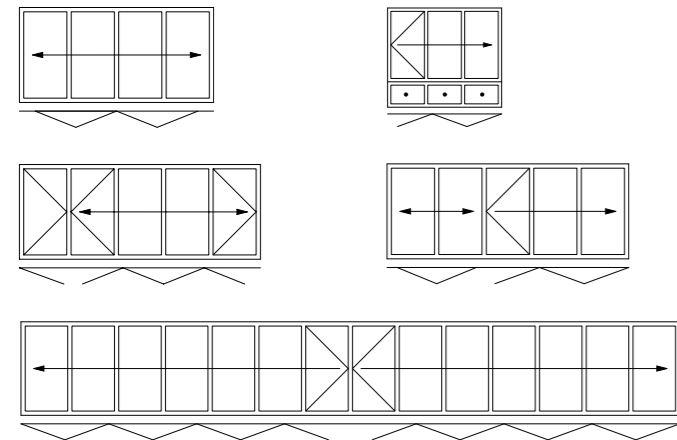
Horizontal section



Vertical section



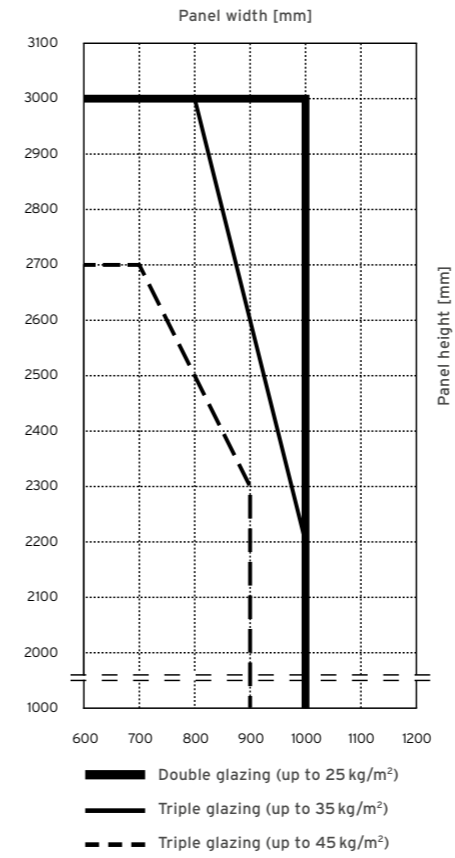
CONFIGURATION VARIANTS



SL 60HK

- Overall depth: 59 mm
- Glass thickness: 5 - 40 mm
- Panel width: up to 1.0 m
- Panel height: up to 3.0 m
- Panel weight: up to 100 kg
- Wind loads & water tightness independently tested in Hong Kong

PANEL SIZES



FEATURES

	Resistance to wind loads in accordance with ASTM E330	5,340 Pa
	Water tightness in accordance with ASTM E331-00	1,500 Pa
	Air permeability in accordance with ASTM E283-24	300 Pa
	Resistance to repeated opening and closing in accordance with DIN EN 12400	10.000 cycles
	Sound reduction index in accordance with DIN EN ISO 10140-1	R _w up to 45 dB
	Thermal transmittance in accordance with DIN EN ISO 10077-1	≥ 1,4 W/m ² K

Note: Specifications vary depending on version and glass



SL 60HK / MOUNT PAVILIA, HONG KONG

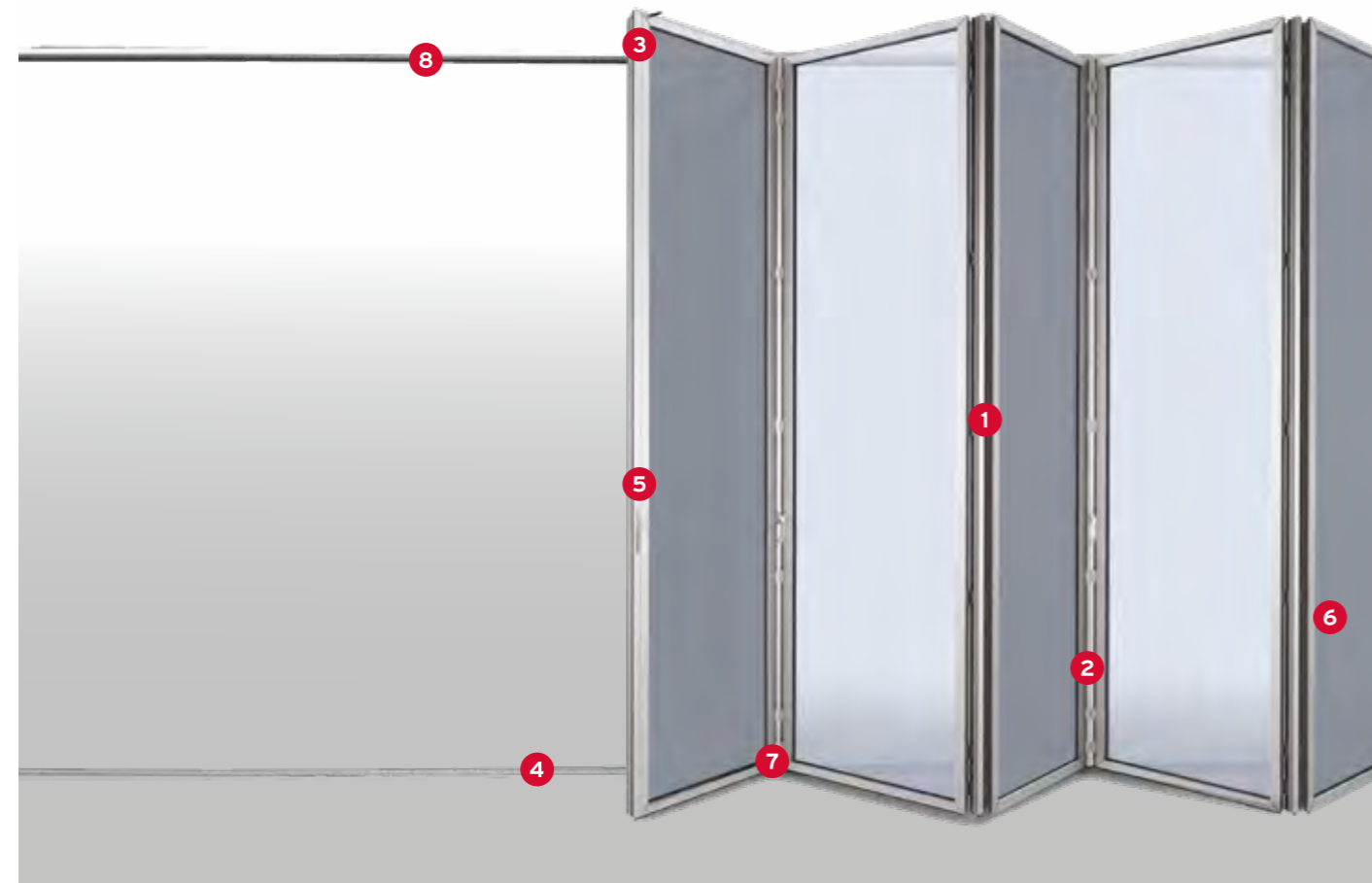
THE SL 70e BI-FOLDING DOOR

Aluminium, thermally insulated

FOR EXACTING REQUIREMENTS AND SEGMENTATION

The thermally insulated SL 70e aluminium bi-folding door system is fitted with runner and locking posts between its individual panels to guarantee excellent stability. This is reflected in the results of its hurricane test in accordance with American standards, during which it was subjected to wind

speeds of up to 300 km/h. It is available with a range of different floor track variants to allow you maximum creative freedom in your design. And with the SL 70e, segmented floor plans are no problem, either. Thanks to its combination of stainless steel track rollers and a stainless steel floor track, it is low-wearing and quiet in operation.



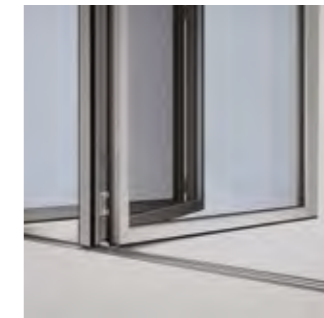
1 THERMAL INSULATION
 · Sturdy hollow-chamber profiles with break profiles and foam core for optimum thermal insulation and energy savings



2 STABILITY
 · High stability thanks to roller-mounted posts in the moving panels
 · Panels lock in place using 24 mm espagnolette in the frame profile
 · High burglar and storm resistance



3 FUNCTIONAL RELIABILITY
 · Controlled opening and closing of the access panel guaranteed
 · Special panel catch locks the access panel in place



4 ACCESSIBILITY
 · Flush floor track guarantees accessibility and no thresholds at the room opening



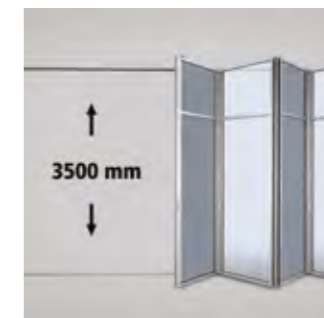
5 SECURITY/CONVENIENCE
 · Designer stainless steel handle with built-in SL comfort lock (lever handle, mortice sash lock with profile cylinder and locking bolt for convenient operation)



6 WIDTH ALIGNMENT
 · Easy width adjustment for dimensional tolerances, even after installation
 · Hinge pin lock for burglary resistance



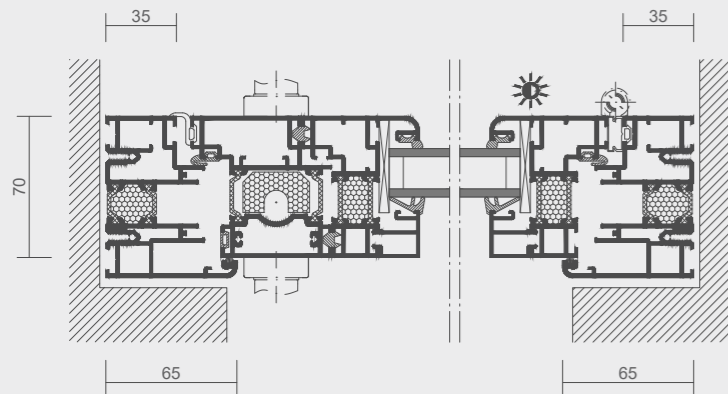
7 EASE OF USE
 · Durable stainless steel carriages for easy and quiet sliding of bi-folding door elements
 · Intelligent positioning protects against dust and dirt



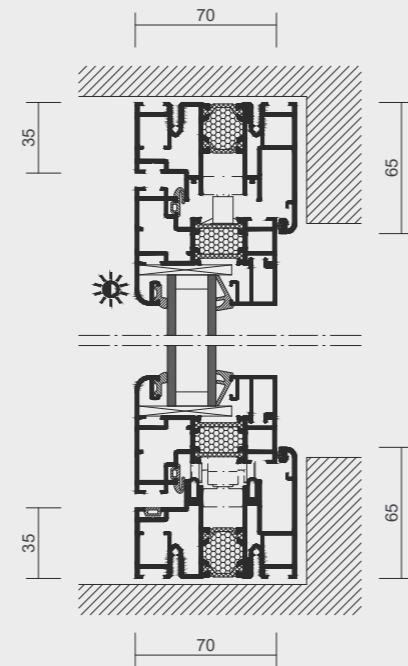
8 PANEL HEIGHT
 · Maximum panel heights of up to 3,500 mm thanks to innovative profile technology
 · Perfect for business entrances

Detail sections & features

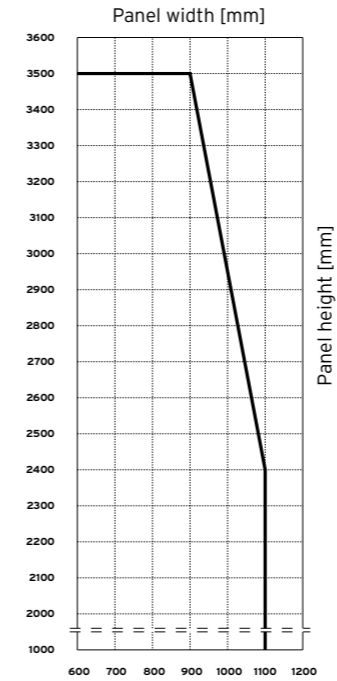
Horizontal section



Vertical section



PANEL SIZES

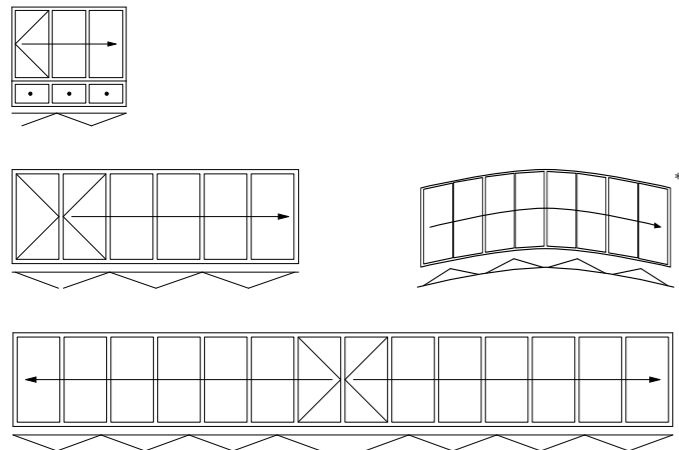


FEATURES

	Resistance to wind loads in accordance with ASTM E330	5,040 Pa
	Water tightness in accordance with ASTM E331-00	600 Pa
	Air permeability in accordance with ASTM E283-24	300 Pa
	Resistance to repeated opening and closing in accordance with DIN EN 12400	10,000 cycles
	Sound reduction index in accordance with DIN EN ISO 10140-1	R'w up to 45 dB
	Thermal transmittance in accordance with DIN EN ISO 10077-1	Uw ≥ 1.7 W/m²K

Note: Specifications vary depending on version and glass

CONFIGURATION VARIANTS



* on request

SL 70e

- Overall panel depth: 70 mm
- Sight line in panel joint: 157 mm
- Glass thickness: 20 to 38 mm
- Uw = 1.7 W/m²K
- Maximum panel size: 900 x 3,500 mm
- Panel weight: up to 100 kg
- Glass-dividing transom rail required for construction heights over 3,000 mm
- Hurricane tested up to wind loads of 300 km/h in accordance with American standards (optional)



SL 70e / CAUSEWAY BAY, HONG KONG

BI-FOLDING DOORS - COMPARISON

Overview of all features and performance ratings



SL 60HK / MOUNT PAVILIA, HONG KONG



	ECOLINE	HIGHLINE	SL 60HK	SL 70e
Profile				
Thermally insulated	●	●	●	●
Non-insulated	○	○	●	○
Overall depth	67 mm	84 mm	59 mm	70 mm
Panel joint sight line	99 mm	99 mm	130 mm	157 mm
Frame height	0 - 72 mm	0 - 72 mm	0 - 65 mm	0 - 65 mm
Glazing				
Glass thickness	5 - 36 mm	22 - 60 mm	5 - 40 mm	20 - 38 mm
Thermal insulation value				
U-value	≥ 1.1 W/m²K	≥ 0.8 W/m²K	≥ 1.4 W/m²K	≥ 1.7 W/m²K
Panels				
Max. panel dimensions (max. width x max. height)	1 m x 3 m	1 m x 3.5 m	1 m x 3 m	0.9 m x 3.5 m
Panel weight	90 kg	110 kg	100 kg	100 kg
Impermeability				
Wind load resistance	3,500 Pa	3,500 Pa	5,340 Pa	5,040 Pa
Impermeability to driving rain	600 Pa	600 Pa	1,500 Pa	600 Pa
Air permeability	300 Pa	300 Pa	300 Pa	300 Pa
Burglar resistance	RC2/RC2N	RC2/RC2N	RC2/RC2N	NPD



WATCH OUR VIDEO TO FIND OUT MORE ABOUT THE BI-FOLDING DOOR FAMILY AND THE BENEFITS IT OFFERS. ROLL THE FILM!



SL 60HK / MOUNT PAVILIA, HONG KONG

THE PERFECT
solution FOR ANY
REQUIREMENT

REFERENCE PROJECTS

HARMONY

Residential development

YEAR
2017

OWNER
SEA Group

ARCHITECT
Lu tang Lai Architects Limited

PLACE
44 Stubbs Road, Hong Kong

SYSTEM
SL 60 bi-folding glass door (22 sets)



SL 60HK / THE HARMONY, HONG KONG

THE PAVILIA HILL

High-rise residential development



YEAR
2017

OWNER
New World Development
Company Limited

ARCHITECT
P&T Architects and
Engineers Limited

PLACE
18A, Tin Hau Temple Road
North Point, Hong Kong

SYSTEM
SL 60 bi-folding glass door
(360 sets)



MOUNT PAVILIA

Low-rise residential development



YEAR
2017

OWNER
New World Development
Company Limited

ARCHITECT
Wong Tung & Partners Limited

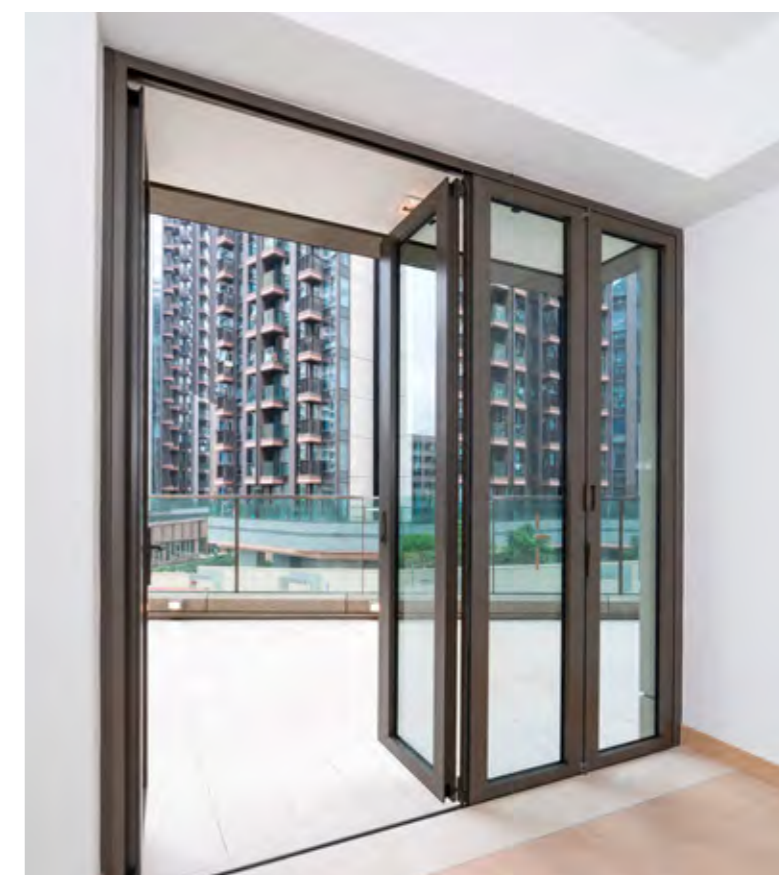
PLACE
663 Clear Water Bay Road, Sai Kung
New Territories

SYSTEM
SL 60 bi-folding glass door (345 sets)



ONE HOMANTIN

High-rise residential development



YEAR
2018

OWNER
Wheelock Properties
Hong Kong Limited

ARCHITECT
P&T Architects and
Engineers Limited

PLACE
1 Sheung Foo Street
Ho Man Tin, Kowloon

SYSTEM
SL 60 bi-folding glass door
(568 sets)

SERENITY POINT

Detached house



YEAR
2018

OWNER
Chinachem Group

ARCHITECT
Dennis Lau & Ng Chun Man Architects &
Engineers (HK) Limited

PLACE
2 Serenity Path, Sai Kung
New Territories

SYSTEM
cero sliding glass door
(4 sets)



OCEAN TERMINAL EXTENSION

Commercial development



YEAR
2017

OWNER
Harbour City Estates Limited

ARCHITECT
Foster and Partners

PLACE
Harbour City, Tsim Sha Tsui, Kowloon

SYSTEM
zero sliding glass door
(29 sets)



Solarlux Hong Kong Limited
Room 2 · 10/F NEO · 123 Hoi Bun Road
Kwun Tong · Hong Kong
T +852 2910 1618 · infohk@solarlux.com
solarlux.com